

**SUFU Antibody (monoclonal) (M01)**

Mouse monoclonal antibody raised against a partial recombinant SUFU.

Catalog # AT4102a

**Specification**

---

**SUFU Antibody (monoclonal) (M01) - Product Information**

Application	E
Primary Accession	<a href="#">O9UMX1</a>
Other Accession	<a href="#">BC013291</a>
Reactivity	Human
Host	Mouse
Clonality	Monoclonal
Isotype	IgG2a Kappa
Calculated MW	53947

**SUFU Antibody (monoclonal) (M01) - Additional Information**

**Gene ID** 51684

**Other Names**

Suppressor of fused homolog, SUFUH, SUFU

**Target/Specificity**

SUFU (AAH13291, 181 a.a. ~ 280 a.a) partial recombinant protein with GST tag. MW of the GST tag alone is 26 KDa.

**Dilution**

E~~N/A

**Format**

Clear, colorless solution in phosphate buffered saline, pH 7.2 .

**Storage**

Store at -20°C or lower. Aliquot to avoid repeated freezing and thawing.

**Precautions**

SUFU Antibody (monoclonal) (M01) is for research use only and not for use in diagnostic or therapeutic procedures.

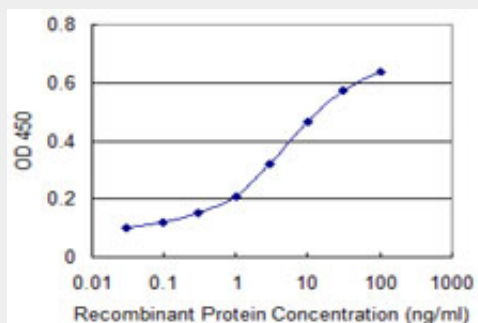
**SUFU Antibody (monoclonal) (M01) - Protocols**

Provided below are standard protocols that you may find useful for product applications.

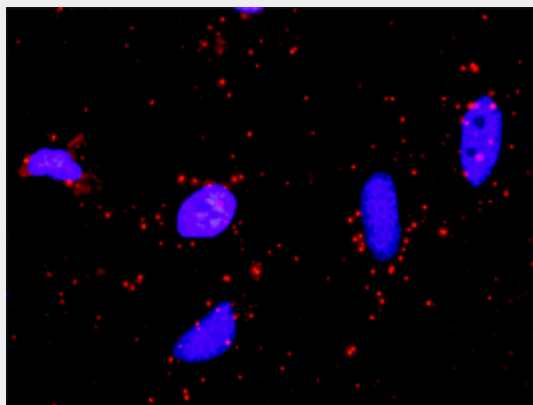
- [Western Blot](#)
- [Blocking Peptides](#)
- [Dot Blot](#)
- [Immunohistochemistry](#)

- [Immunofluorescence](#)
- [Immunoprecipitation](#)
- [Flow Cytometry](#)
- [Cell Culture](#)

### **SUFU Antibody (monoclonal) (M01) - Images**



Detection limit for recombinant GST tagged SUFU is approximately 0.1ng/ml as a capture antibody.



Proximity Ligation Analysis of protein-protein interactions between STK36 and SUFU HeLa cells were stained with anti-STK36 rabbit purified polyclonal 1:1200 and anti-SUFU mouse monoclonal antibody 1:50. Each red dot represents the detection of protein-protein interaction complex, and nuclei were counterstained with DAPI (blue).

### **SUFU Antibody (monoclonal) (M01) - Background**

The Hedgehog signaling pathway plays an important role in early human development. The pathway is a signaling cascade that plays a role in pattern formation and cellular proliferation during development. This gene encodes a negative regulator of the hedgehog signaling pathway. Defects in this gene are a cause of medulloblastoma. Alternative splicing results in multiple transcript variants.

### **SUFU Antibody (monoclonal) (M01) - References**

Incomplete penetrance of the predisposition to medulloblastoma associated with germ-line SUFU mutations. Brugi?res L, et al. J Med Genet, 2010 Feb. PMID 19833601. Identification of a SUFU germline mutation in a family with Gorlin syndrome. Pastorino L, et al. Am J Med Genet A, 2009 Jul. PMID 19533801. Expression of sonic hedgehog signaling molecules in normal, hyperplastic and carcinomatous endometrium. Kim KH, et al. Pathol Int, 2009 May. PMID 19432668. Role and regulation of human tumor suppressor SUFU in Hedgehog signaling. Cheng SY, et al. Adv Cancer Res, 2008. PMID 19055941. MicroRNA expression changes during human leukemic HL-60 cell

differentiation induced by 4-hydroxynonenal, a product of lipid peroxidation. Pizzimenti S, et al. Free Radic Biol Med, 2009 Jan 15. PMID 19022373.